

RAEDWALD TRUST

NEWSLETTER

December 2025



A message from **SPRING ROAD:**

This term has seen the launch of the Raedwald Trust Assessment Centre. The Assessment Centre team works across all our academies, overseeing the induction of new students and following the pupil journey during their placement with Raedwald. All students, whichever Pathway they follow, are supported by a Student Support Plan which is reviewed regularly and details their learning journey. The Assessment Centre team works with Academy teams to support with identifying students' barriers to learning and putting in place appropriate strategies and intervention to meet their needs.

TRADED SERVICES UPDATE:

"The School Commissioned Services (Traded Services) team has had a busy and productive start to the Autumn term.

We were delighted to represent the Raedwald Trust at a number of national conferences and events across the UK. These included "Hospital Education: Working the Wards", where we shared our work supporting reading for pupils with complex needs, and "Education Estates: SEND" presenting on the design of positive, inclusive environments for SEND pupils. We also enjoyed hosting a stall at the TES SEND Show in London. This provided a great opportunity to connect with schools, local authorities and partners, and to showcase the range of school commissioned support available through the Trust.

Our specialist Cognition & Learning team continues to offer an exceptional service to the pupils, families and staff at one of our local secondary schools. Pupils have now fully transitioned into a range of subjects in the main school and are successful and thriving!

As the end of term is upon us, we excited to announce the launch of our new RT-Live package, available to Year 11 pupils from January 2025, designed to provide targeted, flexible support at a key transition point."

Alice Crozier-Green

Head of Traded Services



PANTOMANIA RUNS THROUGH RAEDWALD!



Students at St Christopher's visited the New Wolsey Theatre to watch the pantomime Beauty and the Beast. The performance was full of laughter and festive cheer, and it gave everyone a chance to experience live theatre in a magical setting.

Also this term, pupils have been busy developing practical skills that will serve them well in everyday life. They took part in travel training, learning how to use the bus confidently and safely. They also explored meal planning and budgeting, followed by preparing and enjoying a delicious meal together.

Our Christmas dinner was a true team effort, with pupils planning, cooking, and sharing a festive feast.

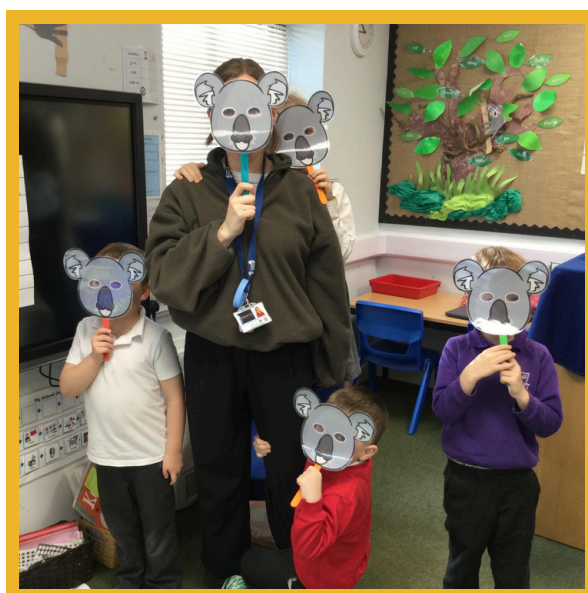
Working with Suffolk County Council on the Form the Futures project, pupils explored their strengths and how these could translate into future careers. Pupils visited various Post-16 provisions and one pupil completed a work experience placement at Heathpatch Dairy.

Finally, we're delighted to welcome Clinton Davies to the St Christopher's Team. We are excited about the expertise and energy he brings!



Students at First base in both Ipswich and Bury St Edmunds visited the pantomime to see stunning performances of Alice and Wonderland and Rapunzel. For some of them, this was their first time visiting the theatre. They also welcomed their parents, grandparents and siblings into First Base for an afternoon of fun Christmas activities.

They also welcomed their parents, grandparents and siblings into First Base for an afternoon of fun Christmas activities. First Base Bury's afternoon ended with an amazing musical rendition of Jingle Bells and First Base Ipswich finished with some delicious hot chocolates. What a lovely end to the term.



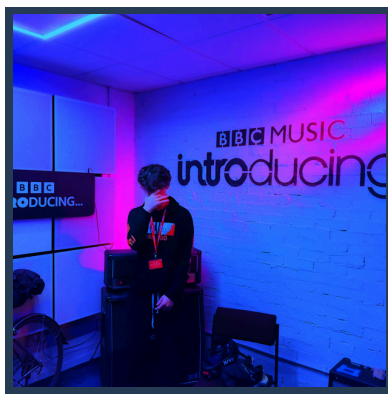
KOALA MASKS?

No explanation, Just Vibes!

Westbridge have had an amazing term! Some of their Year 11 pupils sat mock GCSE exams this term, and they showed dedication, maturity, resilience, and excellent engagement throughout. This was a valuable learning experience for them as they prepare for the exam season ahead. Beyond the classroom, pupils have enjoyed a variety of enriching experiences. Vocational visits took place for some pupils to BBC Radio Suffolk, offering valuable insight into media careers, while in RE, students explored faith and culture during a trip to a local Christian church. We also welcomed Suffolk Police, who delivered a careers-focused escape room experience, and hosted careers experts who provided guidance on enhancing CVs and showcasing skills effectively.



@WESTBRIDGE!



Creative Art projects have showcased incredible talent and imagination, and Their new, engaging science curriculum has sparked curiosity and enthusiasm among learners. We are also proud to celebrate the creativity of one pupil who has produced their own music independently – a fantastic achievement! In addition, Their whole staff and pupil community came together for a wonderful collaboration, singing Walking in a Winter Wonderland for the Christmas concert, spreading festive cheer across the academy.

A Special Gift



Nicola Edwards was honoured with the presentation of a portrait produced by a patient whom she had supported, a gesture symbolising gratitude for her unwavering service, compassion and her consistent commitment to going above and beyond in the care of all those she encounters at West Suffolk Hospital.

ROBOTDOG



Last seen at

ALDERWOOD

This term at Alderwood, the Student Council have been busy positively shaping the day-to-day life of the pupils at Alderwood. The Student Council meet with school leaders each fortnight, through this the pupils are able to discuss progress with previously agreed actions and also suggest new ideas.

Pupils have responded to this process really responsibly, with suggestions being such as new games to be played at break times, more variety in the fruit and snacks available and also one suggestion of a career focussed session with a Police Officer. Following on from that, we welcomed PC Hannah Canning to Alderwood on 9th December, who shared with pupils her journey into the Police Force, including what her job currently entails, as well as further engaging the pupils by bringing in some extra uniform for them to try and on and also taking fingerprints for each child to make their own keyring.

We have introduced a new Social and Emotional Learning (SEL) focus which is interwoven across all areas of the school day at Alderwood, both through direct teaching in the classroom and also within all social times. Pupils are recognised when they demonstrate these core values and consistent achievement against them are celebrated in a weekly assembly.

Alongside this, pupils work collaboratively as a class to accumulate Class Dojo points, again linked into the five SEL Core Values. When a set target is reached, an agreed activity is chosen by the class. This term we have visited Clip 'n' Climb, Jump In and a Cat Café.

Careers have been a focus at Alderwood this term. They have had the amazing experience of working alongside worldwide engineering services and nuclear organisation, Atkins Realis. As part of their initial visit they, a robot dog visited the site! The dog being used is primarily used in environments that humans cannot access (asbestos, nuclear). Pupils were able to interact and even control the dog. Pupils interacted amazingly well with the Atkins Realis staff, asking lots of questions.

The Albany Academy:

The traded group have actively engaged in two new sporting activities this term demonstrating both their commitment to broadening their experiences and their willingness to connect with diverse areas of the community. They have participated in Padel and undertaken training at the Iron Island Gym.

Through their involvement in Padel, they have acquired new technical skills and refined their tactical awareness to the point of becoming competitive players. Their enthusiasm has been such that they have requested an extended block of Padel sessions preferring to develop further their expertise rather than transition to another sport. The Tuesday afternoon PE sessions have evolved into highly anticipated events with a strong sense of competition and collective engagement.

In addition, the group has also undertaken personal training sessions at Iron Island, a professional bodybuilding facility. This experience has significantly enhanced their confidence and theoretical understanding of effective training methods. It has contributed to the development of lifelong health and fitness practices whilst also strengthening their resilience in unfamiliar environments.

Parkside Academy:

We are proud of the progress that our Parkside continue to make, as well as the way they represent our school. There have been many highlights, including post-16 visits and experiences at college and employers. Celebration and participation in Mental Health Day (wear yellow), Kindness and anti-bullying (odd sock day), and engaging with the school nurse and chaplain support.

It's wonderful to see them engaged and so enthusiastic. From lively debates in citizenship about contemporary issues to participating in a Youth Justice Project, preparing for the concert, and taking on leadership roles in PE. These have all played an important role in developing confidence, independence, and wider life skills.

Merry Christmas!

THE RAEDWALD
TRUST